

n <sub>2</sub> [min <sup>-1</sup> ]	i	P <sub>1M</sub> [kW]	M <sub>2M</sub> [Nm]	fs	P <sub>1R</sub> [kW]	M <sub>2R</sub> [Nm]		B5					B14					RD	 Ratios code		
								B	C	D	E	F	O	P	Q	R	T			U	V
								63	71	80	90	100 112	56	63	71	80	90			100 112	132

## F32A



n<sub>1</sub> = 1400 min<sup>-1</sup>

174	<b>8.03</b>	1.5	79	2.2	<b>3.2</b>	<b>170</b>	25	B										C	C					96	2818	
135	<b>10.40</b>	1.5	102	1.8	<b>2.7</b>	<b>185</b>	25	B											C	C					96	2813
96	<b>14.53</b>	1.5	143	1.4	<b>2.1</b>	<b>200</b>	25	B											C	C					96	1918
83	<b>16.84</b>	1.5	165	1.2	<b>1.8</b>	<b>200</b>	25	B											C	C					96	1718
71	<b>19.76</b>	1.5	194	1.0	<b>1.5</b>	<b>200</b>	25	B											C	C					96	1518
59	<b>23.59</b>	1.1	170	1.2	<b>1.3</b>	<b>200</b>	25	B											C	C					96	1318
55	<b>25.58</b>	1.1	184	1.1	<b>1.2</b>	<b>200</b>	25	B											C	C					96	1513
43.5	<b>32.20</b>	0.75	158	1.3	<b>0.9</b>	<b>200</b>	25	B											C	C					96	1018
35.8	<b>39.05</b>	0.55	141	1.2	<b>0.7</b>	<b>170</b>	25	B											C	C					96	1510
33.6	<b>41.68</b>	0.55	150	1.3	<b>0.7</b>	<b>200</b>	25	B											C	C					96	1013
25.7	<b>54.39</b>	0.37	132	1.5	<b>0.6</b>	<b>200</b>	25	B											C	C					96	913
19.5	<b>71.82</b>	0.37	174	1.0	<b>0.38</b>	<b>180</b>	25	B											C	C					96	713
16.9	<b>83.04</b>	0.25	136	1.3	<b>0.31</b>	<b>170</b>	25	B											C	C					96	910
12.8	<b>109.66</b>	0.25	180	0.9	<b>0.24</b>	<b>170</b>	25	B											C	C					96	710

## F33A

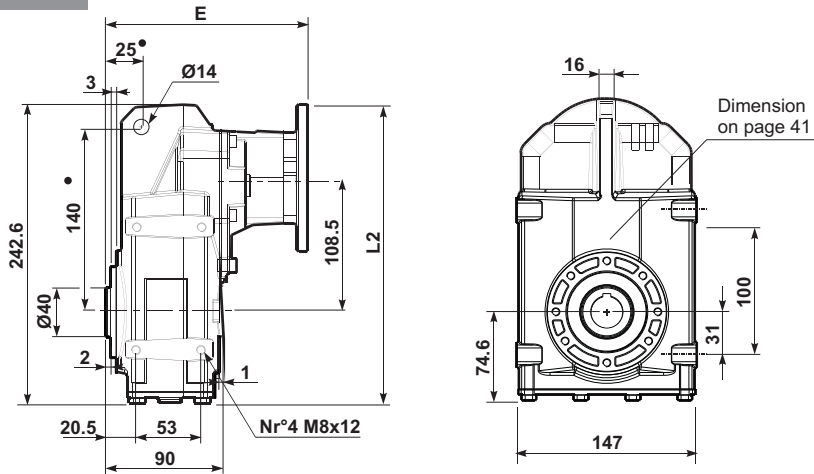
n<sub>1</sub> = 1400 min<sup>-1</sup>

13.2	<b>106.07</b>	0.25	168	1.2	<b>0.3</b>	<b>200</b>	25											B-C	C						93	101718	
11.9	<b>118.06</b>	0.25	187	1.1	<b>0.3</b>	<b>200</b>	25												B-C	C						93	151313
10.1	<b>138.43</b>	0.25	220	0.9	<b>0.2</b>	<b>200</b>	25												B-C	C						93	91718
9.9	<b>140.92</b>	0.18	161	1.2	<b>0.2</b>	<b>200</b>	25												B-C	C						93	131313
7.7	<b>182.80</b>	0.18	209	1.0	<b>0.2</b>	<b>200</b>	25												B-C	C						93	71718
7.3	<b>192.36</b>	0.18	220	0.9	<b>0.2</b>	<b>200</b>	25												B-C	C						93	101313
5.5	<b>256.12</b>	0.12	195	1.0	<b>0.1</b>	<b>200</b>	25												B-C	C						93	71318
4.2	<b>331.50</b>	0.12	252	0.8	<b>0.1</b>	<b>200</b>	25												B-C	C						93	71313
3.9	<b>361.22</b>	0.12	275	0.5	<b>0.1</b>	<b>140</b>	25												B-C	C						93	71710
2.8	<b>506.11</b>	0.12	385	0.4	<b>0.1</b>	<b>170</b>	25												B-C	C						93	71310

B, C, ..	Flange disponibili Motor flange available	B	Montaggio con boccia di riduzione Coupling by means of reduction bushing		C	Posizione fori flangia/basetta motore Motor flange/terminal box position	
----------	--	---	---	--	---	---	---



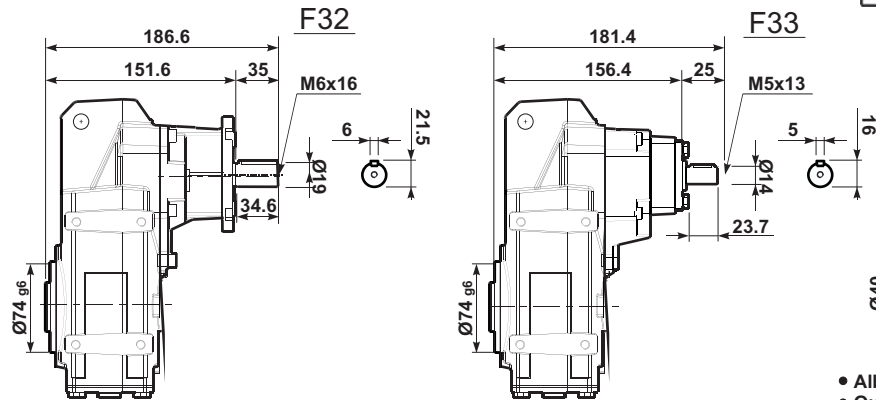
Shaft Mount



Motor Flange	E	
	F32	F33
63 B5	161	163
71 B5	159	161
80-90 B5	161	-
56 B14	-	166.5
63 B14	-	165.5
71 B14	159	162.5
80 B14	160	-
90 B14	161	-

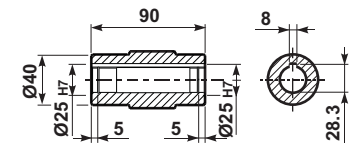
Motor Flange	L2	
	F32	F33
63 B5	253	253
71 B5	264	264
80-90 B5	284	-
56 B14	-	222
63 B14	-	228
71 B14	235.5	235.5
80 B14	243	-
90 B14	253	-

Type R

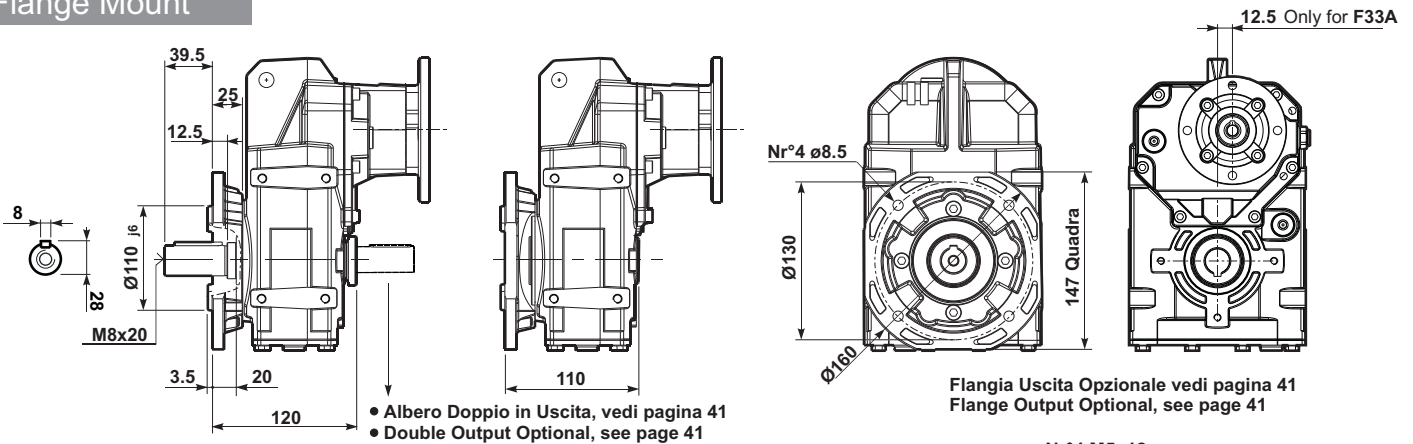


Peso Weight Kg	
F32A	7.2
F33A	7.6

- Alberi di uscita a richiesta vedi pagina 40
- Output shaft on request, see page 40



Flange Mount



Output shaft

